

**PROCEEDINGS of the
32nd CONVENTION**
OF THE
**ASSOCIATION OF MUNICIPAL ELECTRICITY
UNDERTAKINGS OF SOUTHERN AFRICA**
(FOUNDED 1915)

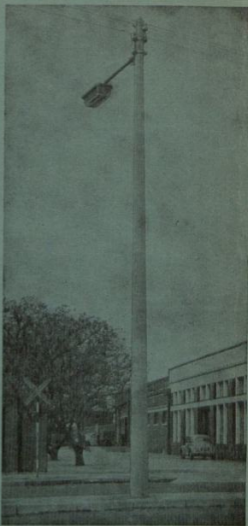
HELD AT
CAPE TOWN
15th to 18th APRIL, 1958



**VERRIGTINGS van die
32ste KONVENSIË**
VAN DIE
**VERENIGING VAN MUNISIPALE ELEKTRISITEITS-
ONDERNEMINGS VAN SUIDELIKE AFRIKA**
(GESTIG 1915)

GEHOU TE
KAAPSTAD
15 tot 18 APRIL, 1958

Now Available in
PRESTRESSED CONCRETE



A long lifetime of trouble-free service...
with no maintenance

SUPERCONCRETE

**LIGHTING STANDARDS
TRANSMISSION POLES
CABLE DUCTS**

Manufactured by:

SUPERCONCRETE PIPES (S.A.) LTD.

MAIN BEEF ROAD, ROODEPOORT, TRANVAAL. P.O. BOX 92 TELEPHONE: 763-4221 TELEGRAPHIC ADD.: "SUPERPIPES"

**PROCEEDINGS of the
32nd CONVENTION**

OF THE
**ASSOCIATION OF MUNICIPAL ELECTRICITY
UNDERTAKINGS OF SOUTHERN AFRICA**

(FOUNDED 1915)

HELD AT

CAPE TOWN

15th to 18th APRIL, 1958



**VERRIGTINGS van die
32ste KONVENSIË**

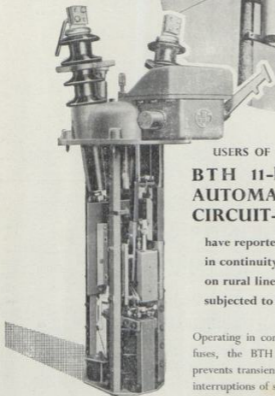
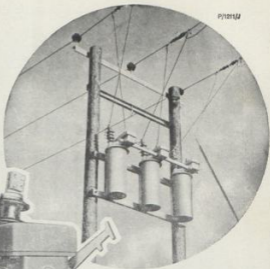
VAN DIE
**VERENIGING VAN MUNISIPALE ELEKTRISITEITS-
ONDERNEMINGS VAN SUIDELIKE AFRIKA**

(GESTIG 1915)

GEHOU TE

KAAPSTAD

15 tot 18 APRIL, 1958



USERS OF
**BTH 11-kV
 AUTOMATIC
 CIRCUIT-RECLOSERS**

have reported great improvements
 in continuity of supply
 on rural lines especially in areas
 subjected to severe lightning and gales.

Operating in conjunction with slow-blowing fuses, the BTH automatic circuit-recloser prevents transient faults from causing lengthy interruptions of supply.

BRITISH THOMSON-HOUSTON
 THE BRITISH THOMSON-HOUSTON COMPANY (SOUTH AFRICA) (PTY.) LIMITED

SWITCHGEAR DEPARTMENT
 STEELEDALE
 JOHANNESBURG

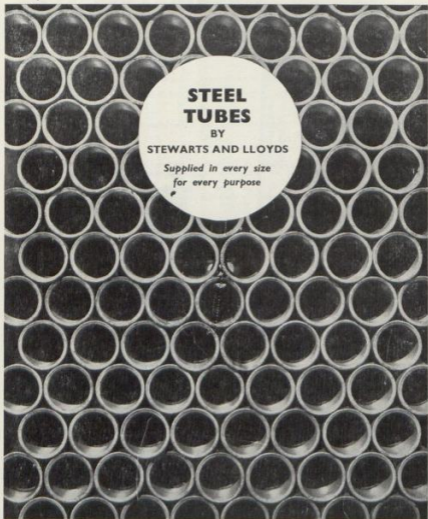
INDEX/INHOUD

GENERAL/ALGEMEEN

Official Photographs/Amptelike Fotos	8, 9, 40
Executive Council and Sub-Committees, etc. for 1958/59/Uitvoerende raad en onderkomitees ens.	10
Past Officers and Members of Council/Oudampptenare en lede van raad	11
List of Members as at 31st May, 1958/Lys van lede—31/5/58	14
Constitution/Konstitusie	21
Members, Delegates and Visitors Attending the Convention/Lede en afgevaardigdes 32ste. Konvensie	31
Agenda and Programme/Agenda en Program	36
Welcome by his Worship the Mayor of Cape Town (Colonel Billingham)/Verwelkoming deur Sy Edelagbare die Burgermeester van Kaapstad (Kolonel Billingham)	43
Opening of Convention by Mr. W. J. B. Slater Acting Administrator for the Cape Province/Opening van die Konvensie deur die Waarnemende Administrateur van die Kaap-Provinsie Mnr. W. J. B. Slater	45
Election of President/Kiesing van die President	49
Venue of next Convention/Vergaderplek van die volgende Konvensie	50
Election of Vice-President/Kiesing van die Onder-President	50
Apologies/Verskonings	53
Greetings/Groete	54
Presentations (Past Presidents', Medals and Certificates/Presentasie van erepenninge en Sertifikate aan Oud-Presidente)	54
Election of Executive Council/Verkieing van Uitvoerende Raad	55, 67
Presidential Address/Rede van die President	56
Election of Honorary Members/Kiesing van Erelede	89
Annual Report of the Secretaries/Jaarverslag van die Sekretaris	90
Electrical Wiremen's Registration Board/Registrasieraad vir Elektrise Draadwerkers	97
Coal Allocation/Toekenning van Steenkool	98
Members Forum/Lede Forum	131, 235
Amendments of Constitution/Wysiging van Grondwet	194
Safety Precautions/Veiligheidsmaatreëls	195
S.A. Bureau of Standards/S.A. Buro van Standaarde	203
Code of Practice for Sub-Stations/Kode van gebruik by Substasies	207
Technical Staff and Man Power/Tegniese Personeel en Mannekrag	208
Rights of Supply/Regte van Voorsiening	215
Tariff Survey/Oondersoek na Elektrisiteits Tariewe	235
Closing Session/Afgesluit van Konvensie	247

PAPERS/REFERATE

Gas Pressure and Oil Filled Cables by P. W. Cave	
Gasdrukking en Oliege vulde Kables deur P. W. Cave	69
Synthetic Rubber and Thermoplastic Cables by B. B. Evans	
Sintetiese Ruber en Termoplastiese Kables deur B. B. Evans	103
Design and Economics of Township Reticulation by Low Voltage Overhead Mains by H. Wood	
Ontwerp en Ekonomie van Bolguse Laagspanningskraglyne vir Dorpsgebiede deur H. Wood	159



S&L
Regs. Trade Mark

STEWARTS AND LLOYDS OF SOUTH AFRICA LTD

S.T.A

LIST OF ADVERTISERS
LYS VAN ADVERTEERDERS

A		L	
Aberdare Cables Africa Limited	--- 223	G. H. Langler & Co. Ltd.	--- 148
African Cables Limited	--- 120	M	
African Malleable Foundries Ltd.	--- 232	Harold Marthinussen & Co. (Pty.) Ltd.	--- 150
Allenwest S.A. (Pty.) Ltd.	--- 226	L. H. Marthinussen Ltd.	--- 142
Automatic Telephones (S.A.) Ltd.	--- 230	Marthinussen & Coutts (Pty.) Limited	--- 160
Arthur Trevor Williams	--- 52	Metropolitan-Vickers S.A. (Pty.) Ltd.	--- 152
Aycliffe Cables Limited	--- 64	Mitchell Engineering (Pty.) Ltd.	--- 154
B		Midland Electric Manufacturing Co. Ltd.	164
British Insulated Callender's Cables (S.A.) (Pty.) Ltd.	--- 114	P	
British Thomson-Houston Co., (S.A.) (Pty.) Ltd.	--- 2	C. A. Parsons & Co. (S.A.) (Pty.) Ltd.	--- 178
British General Electric Co., (Pty.) Ltd. Cover Page	--- 4	Power Engineers (Pty.) Ltd.	--- 132
Brush Group (S.A.) Limited	--- 214	R	
A. M. Burgun (Pty.) Limited	--- 218	Reunert & Lenz Limited	--- 42
C		A. Reyrolle & Co. (S.A.) (Pty.) Ltd.	--- 250
Caltex (Africa) Limited	--- 204	Rhodesian Cables Ltd.	--- 88
Contactar (Pty.) Ltd.	--- 212	Rice & Diethelm Limited	--- 94
Cooper & De Beer (Pty.) Ltd.	--- 192	S	
Crompton-Parkinson (S.A.) (Pty.) Ltd.	--- 188	Samuel Osborn (S.A.) (Pty.) Ltd.	--- 176
D		Scottish Cables (S.A.) Limited	--- 130
Davidson & Co., (Africa) (Pty.) Ltd.	--- 228	Southern African Cable Makers Association	102
E		South African Engineer & Electrical Review (Pty.) Ltd.	--- 141
English Electric Co., S.A. (Pty.) Ltd.	--- 190	South African General Electrical Co. (Pty.) Ltd.	--- 20
Enfield Cables (S.A.) (Pty.) Limited	--- 224	S.A. Phillips (Pty.) Ltd.	--- 84
Escom	--- 186	Stamcor (Pty.) Limited	--- 90
Falks Electric Supplies (S.A.) (Pty.) Ltd.	128	Standard Telephones & Cables Ltd.	--- 68
F		Stewarts & Lloyds of S.A. Ltd.	--- 4
First Electric Corporation of S.A. Ltd.	--- 202	Siemens Bros. British (Pty.) Ltd.	--- 58
G		Superconcrete Pipes (S.A.) Ltd. Cover Page	2
W. T. Glover & Co. Ltd.	--- 110	T	
H		The Electrical Construction Co. Ltd. Cover Page	3
Heinemann and Murray	--- 246	Thomas Bolton & Sons Ltd.	--- 74
Hopkinsons (S.A.) (Pty.) Ltd.	--- 142	U	
James Howden & Co., Africa (Pty.) Ltd.	--- 138	Union Steel Corp. of S.A. Limited	--- 46
Hensley-Simplex Electric Africa (Pty.) Ltd.	78	V	
I		J. H. Vivian & Co. Limited	--- 242
International Combustion Africa Ltd.	--- 6	Y	
J		Yarrow Africa (Pty.) Limited	--- 198
Johnson & Phillips S.A. (Pty.) Ltd.	--- 124		



power for the nation

INTERNATIONAL COMBUSTION AFRICA LTD.

produce an impressive range of essential equipment for the nation's mines, power stations, and general industry — equipment that is among the foremost of its kind in the world.

THE IMPAX PULVERISER

Ideal for pulverising bituminous coal to burn under boiler or in metallurgical furnaces. The coal is usually ground to such fineness that 90 per cent. will pass through a 100-mesh sieve and 99 per cent. through a 40-mesh sieve. The machine is also suitable for pulverising such materials as chalk, shale and chemical products to a fineness up to 200-mesh.

THE VACSEAL PUMP

Specially designed for the handling of thick and abrasive pulps, the Vacseal is now used extensively in the mines and in the new uranium industry on the Rand. The Vacseal, is in effect, a glandless pump, and no gland pressure sealing water is required.

"L" TYPE STOKER

Every known design and size of water tube boiler is today being fired by the "L" type Travelling Grate Stoker. They have been specified for many of South Africa's newest power stations. The "L" Stoker is famous for its high burning efficiency and remarkably low maintenance.

BOILERS PRODUCED BY I.C.A.L.

Boilers are being installed in many of South Africa's new power stations — providing power essential in our new drive for full industrialisation.

POWER FOR THE NATION BY

INTERNATIONAL COMBUSTION AFRICA LTD.

JOHANNESBURG OFFICE: GENEVA HOUSE, LOVEDAY STREET, P.O. BOX 5981. — PHONE 34-3568
WORKS: ALBERTON, TRANSVAAL SOUTH AFRICA. DERRY, ENGLAND. SYDNEY, AUSTRALIA.

PERSONAL INDEX
 PERSOONLIKE INHOUD

Aspinall, H. T. --- --- ---	54, 209, 211	King, W. L. --- --- --- ---	54
Axe, L. C. --- --- ---	140, 248	Lategan, Dr. P. N. --- --- ---	98
Berman, Major A. Z. --- --- ---	139, 141	Levick, P. H. --- --- ---	219
Berry, J. --- --- ---	140	Lineker, R. W. --- --- ---	54
Billingham, Col. J. W. O. --- --- ---	43, 249	Lombard, C. --- --- ---	155, 201, 215
Blignaut, Cr. P. G. C. --- --- ---	50, 251	Louw, Cr. A. W. --- --- ---	96
Cave, P. W. --- --- ---	69, 155	Marais, Cr. D. J. --- --- ---	50, 51
Chaplin, Gr. E. L. --- --- ---	220	Martin, E. B. --- --- ---	227
Dalton, C. A. --- --- ---	245	Mathews, J. A. --- --- ---	220
Davies, Cr. L. P. --- --- ---	95	Mayer, Cr. W. F. --- --- ---	236
De Haas, J. J. --- --- ---	55	McIntyre, Cr. J. --- --- ---	136, 139
Divaris, Cr. D. --- --- ---	136	Milton, W. H. --- --- ---	217, 223, 241, 243, 248
Downie, C. G. 50, 51, 53, 54, 55, 56, 67, 86, 87, 88, 89, 95, 96, 98, 100, 101, 129, 131, 133, 143, 147, 149, 151, 155, 157, 187, 190, 193, 194, 195, 199, 200, 201, 206, 207, 209, 210, 211, 213, 215, 223, 225, 227, 234, 235, 247, 248, 249, 251.		Mitchell, J. E. 63, 131, 135, 136, 137, 141, 190, 200, 235, 236, 237, 239, 240, 241, 243, 244, 245, 248.	
Downey, J. C. 50, 55, 96, 133, 144, 199, 200, 201, 206, 207, 215, 219.		Muller, G. J. 65, 100, 155, 201, 211, 237, 244.	
Drewett, H. M. --- --- ---	54	Murray, Nobbs D. --- --- ---	237
Dreyer, H. C. --- --- ---	221, 243	Pieksma, D. H. --- --- ---	139
Du Toit, C. W. H. --- --- ---	203, 207	Pompe van Meerdevoort, J. L. K. --- --- ---	137, 199
Eastman, H. --- --- ---	54	Prins, H. --- --- ---	140
Einhorn, Dr. H. --- --- ---	147, 149, 247	Sibson, A. R. 140, 193, 194, 210, 213, 241, 245.	
Evans, B. B. 101, 103, 145, 147, 149, 151, 153.		Simpson, R. M. O. 87, 129, 137, 139, 190, 225, 241.	
Ewing, R. G. --- --- ---	53	Slater, W. J. B. --- --- ---	45
Fraser, J. C. --- --- ---	195, 201	Stebens, F. --- --- ---	137, 190, 227, 240
Giles, P. A. --- --- ---	85, 134, 135, 199, 213, 216	Sutherland, D. G. --- --- ---	88, 149
Hugo, D. J. --- --- ---	49, 98	Turnbull, A. F. --- --- ---	151, 221, 241
Jackson, A. --- --- ---	137, 190, 227, 240	Turner, H. T. --- --- ---	223, 236
Kane, R. W. 51, 63, 67, 90, 96, 97, 133, 135, 136, 139, 187, 195, 201, 231, 235.		van der Walt, J. L. 43, 49, 50, 86, 139, 194, 207, 208, 211, 213, 240.	
		White, J. --- --- ---	249
		Wood, H. --- --- ---	159, 229, 239

ASSOCIATION OF MUNICIPAL ELECTRICITY UNDERTAKINGS OF SOUTHERN AFRICA

EXECUTIVE COMMITTEE 1958-9



Back Row: P. A. Giles (East London), G. J. Muller (Bloemfontein), J. E. Mitchell (Salisbury), J. C. Downey (Springs),
Cr. L. P. Davies (Springs), C. Lombard (Germiston), F. Stevens (Ladysmith), Cr. J. McIntyre (Durban), R. M. O.
Simpson (Durban), V. E. O. Barratt (Queenstown).

Front Row: Cr. A. W. Louw (East London), Cr. F. J. C. Castelyn (Bloemfontein), Cr. P. S. du Bruyn (Germiston),
R. G. Ewing (Secretary), R. W. Kane (Johannesburg), C. G. Downie (Cape Town President), Cr. W. J. Peters (Cape
Town), Cr. D. J. Marais (Johannesburg), J. L. van der Walt (Krugersdorp), Cr. M. C. Dames (Krugersdorp), Cr.
P. G. C. Bignaut (Pretoria), D. J. Hugo (Pretoria).

PRESIDENT, 1958 — 1959



MR. C. G. DOWNIE (Cape Town)

President :

C. G. Downie (Cape Town)

Vice-President/Vise-President :

R. W. Kane (Johannesburg)

Immediate Past Presidents/Voormalige Presidente :

J. L. van der Walt (Krugersdorp)

J. E. Mitchell (Salisbury)

*Engineer Members/Ingenieur Lede :*D. J. Hugo (Pretoria)
C. Lombard (Germiston)R. M. O. Simpson (Durban)
J. C. Downey (Springs)G. J. Muller (Bloemfontein)
P. A. Giles (East London)*Cities or Towns Represented/Stede of Dorpe Verteenwoordig :*

Krugersdorp	Springs	Salisbury	Johannesburg	Bloemfontein
Cape Town	Germiston	Pretoria	Durban	East London

Chairmen of Regional Branches/Voorsitters van Streektakke :

F. Stevens (Ladysmith)—Natal

V. E. O. Barratt (Queenstown)—Cape Eastern

*Secretaries/Sekretarisse :*Davidson & Ewing (Pty.), Ltd.
P.O. Box 7462, Johannesburg.

SUB-COMMITTEES/ONDER-KOMITEES :

<i>Papers/Verhandelings</i> --- --- --- ---	C. G. Downie (President); R. W. Kane (Vice President); J. L. van der Walt, J. E. Mitchell (Past Presidents).
<i>Tariffs Survey/Ondersoek na Elektriese tariewe</i> --- --- --- ---	J. L. van der Walt (Convener), A. R. Sibson, R. W. Kane, J. C. Downey, C. G. Downie.
<i>Finance/Finansieële</i> --- --- --- ---	R. W. Kane (Convener), J. C. Downey.
<i>Recommendations Committee for new Electrical Commodities/Aanbevelings oor Nuwe Elektriese Toerusting</i> --- --- --- ---	J. L. van der Walt (Convener), J. C. Downey.
<i>Rights of Supply—Industrial Consumers/Regte van Voorstening—Industrieële Verbruikers</i>	C. Lombard (Convener), D. J. Hugo, J. C. Downey.
<i>Representatives/Verteenwoordigers :</i>	
<i>Electrical Wiremen's Registration Board/Raad vir Registrasie van Draadwerkers</i> --- ---	R. W. Kane.
<i>Coal Allocation Committee/Komitee vir die Toekenning van Steenkool</i> --- --- ---	D. J. Hugo, R. W. Kane (Alternate)
<i>Safety Precautions Committee/Veiligheidsmaatreëls</i> --- --- --- ---	J. C. Fraser, J. C. Downey (Alternate)
<i>S.A. Bureau of Standards/S.A. Buro van Standaarde</i> --- --- --- ---	J. C. Downey, C. Lombard (Alternate) P. A. Giles, J. L. van der Walt.
<i>S.A.I.E.E. Committee—Code of Practice for Sub-Stations/S.A.I.E.E. Komitee—Kode van Gebruik by Sub-Stasies</i> --- --- ---	J. L. van der Walt.

S.A. National Committee of the International Electrotechnical Commission?
S.A. Nasionale Komitee van die Internasionale Elektrotegniese Kommissie :

D. J. Hugo
J. Wilson (Alternate)

ASSOCIATION OF MUNICIPAL ELECTRICITY UNDERTAKINGS OF SOUTHERN AFRICA

E. Spilkin, Umtata W. James, Cape Town	1938-39 : G. C. Starkey, East London W. Fowkes, Cape Town	D. J. Hugo, Pretoria J. S. Clinton, Salisbury A. O. Harvey, Springs G. M. Pirie, Bloemfontein D. J. Hugo, Pretoria C. Kinsman, Durban A. O. Harvey, Springs G. M. Pirie, Bloemfontein W. N. Powell, Bloemfontein D. J. Hugo, Pretoria C. Kinsman, Durban J. C. Fraser, Johannesburg G. R. E. Wright, Benoni D. J. Hugo, Pretoria C. Kinsman, Durban J. C. Fraser, Johannesburg G. R. E. Wright, Benoni D. J. Hugo, Pretoria I. C. Fraser, Johannesburg I. C. Downey, Springs D. A. Bradley, Port Elizabeth D. J. Hugo, Pretoria I. C. Fraser, Johannesburg I. C. Downey, Springs H. A. Eastman, Cape Town D. J. Hugo, Pretoria I. C. Fraser, Johannesburg I. C. Downey, Springs H. A. Eastman, Cape Town I. C. Fraser, Johannesburg I. C. Downey, Springs H. A. Eastman, Cape Town G. J. Muller, Bloemfontein A. R. Sibson, Bulawayo J. L. van der Walt, Krugersdorp
E. Spilkin, Umtata C. Olley, Salisbury	1939-44 : G. C. Starkey, East London W. Fowkes, Cape Town	
H. H. Verity, Johannesburg C. Olley, Salisbury	1944-45 : H. E. Gearing, Cape Town R. M. Thomas, Durban	
J. Ohlsen, Bulawayo J. W. du Plessis, Bloemfontein	1945-46 : M. Jaffray, Salisbury E. Boylan, M.P.C., Johannesburg	
P. J. C. du Plessis, M.P.C., (Bloemfontein) Major J. Raftery, J.P., M.P.C., (Durban)	1946-47 : A. Immink, Johannesburg A. Z. Berman, Cape Town	
Major J. Raftery, J.P., M.P.C. (Durban) E. H. Tiddy, East London	1947-48 : J. M. Preller, Pretoria C. G. Thompson, Johannesburg	
E. H. Tiddy, East London I. C. K. Erasmus, J.P., Port Elizabeth	1948-49 : C. C. Thompson, Johannesburg I. Johnston, Durban	
I. C. K. Erasmus, J.P., Port Elizabeth C. E. (Sax) Young, Pietermaritzburg	1949-50 : W. F. du Plessis, Bloemfontein S. H. Millar, Bulawayo	

NOTE.—At the Twenty-Fourth Convention the Rules and Constitution were amended to permit of eight Councillor Members being elected to the Executive and that these Councillor Members shall be the Councillors of those towns whose Engineer Members (other than the two Past Presidents) have been elected to the Executive Council.

As a result of this amendment the undermentioned constituted the Executive Council:—

Councils/Rade : 1950-51 :

Pietermaritzburg	--- --- ---	Councillor C. E. Young	---
Springs	--- --- ---	Councillor L. P. Davies	---
Bulawayo	--- --- ---	Councillor J. J. Wrathall	---
Bloemfontein	--- --- ---	Councillor W. F. du Plessis	---
Cape Town	--- --- ---	Councillor I. Muller	---
Durban	--- --- ---	Councillor G. Hayward	---
Krugersdorp	--- --- ---	Councillor E. B. Neill	---
Johannesburg	--- --- ---	Councillor L. M. Weiner	---

Engineers/Ingénieurs :

---	---	C. R. Hallé
---	---	I. C. Downey
---	---	A. R. Sibson
---	---	G. J. Muller
---	---	H. A. Eastman
---	---	C. Kinsman
---	---	I. L. van der Walt
---	---	I. C. Fraser
---	---	D. A. Bradley
---	---	A. Foden

Councils/Rade : 1951-52 :

Springs	--- --- ---	Councillor L. P. Davies	---
Bulawayo	--- --- ---	Councillor C. M. Newman	---
East London	--- --- ---	Councillor F. T. Fox	---
Johannesburg	--- --- ---	Councillor L. M. Weiner	---
Pretoria	--- --- ---	Councillor C. W. Sinclair	---
Cape Town	--- --- ---	Councillor I. W. O. Billingham	---
Durban	--- --- ---	Councillor E. E. Cheek	---
Krugersdorp	--- --- ---	Councillor H. Pannall	---

Engineers/Ingénieurs :

---	---	J. C. Downey
---	---	A. R. Sibson
---	---	A. Foden
---	---	I. C. Fraser
---	---	D. J. Hugo
---	---	C. G. Downie
---	---	C. Kinsman
---	---	I. L. van der Walt
---	---	C. R. Hallé
---	---	D. A. Bradley

ASSOCIATION OF MUNICIPAL ELECTRICITY UNDERTAKINGS OF SOUTHERN AFRICA

<i>Councils/Rade : 1952-53 :</i>			<i>Engineers/Ingenieurs :</i>
Bulawayo	--- ---	Councillor T. W. Gubb	--- A. R. Sibson
Bloemfontein	--- ---	Councillor E. B. Altona	--- G. J. Muller
Cape Town	--- ---	Councillor A. E. Keen	--- C. G. Downie
Durban	--- ---	Councillor H. L. Richardson	--- G. Kinsman
Johannesburg	--- ---	Councillor H. W. Harrison	--- J. C. Fraser
Krugersdorp	--- ---	Councillor M. C. Dames	--- J. L. van der Walt
Port Elizabeth	--- ---	Councillor L. Dobb	--- D. A. Bradley
Salisbury	--- ---	Alderman Morton Jaffray	--- J. E. Mitchell
			--- C. R. Hallé
			--- J. C. Downey
<i>Councils/Rade : 1953-54 :</i>			<i>Engineers/Ingenieurs :</i>
Johannesburg	--- ---	Councillor H. W. Harrison	--- J. C. Fraser
Bloemfontein	--- ---	Councillor G. A. Fichardt	--- G. J. Muller
Port Elizabeth	--- ---	Councillor A. Markman	--- D. A. Bradley
Cape Town	--- ---	Councillor A. F. Keen	--- C. G. Downie
Durban	--- ---	Councillor H. L. Richardson	--- G. Kinsman
Salisbury	--- ---	Alderman A. Morton Jaffray	--- J. E. Mitchell
Krugersdorp	--- ---	Councillor M. C. Dames	--- J. L. van der Walt
Pretoria	--- ---	Councillor C. E. Acton	--- D. J. Hugo
			--- J. C. Downey
			--- A. R. Sibson
<i>Councils/Rade : 1954-55 :</i>			<i>Engineers/Ingenieurs :</i>
Bloemfontein	--- ---	Councillor F. J. C. Castelyn	--- G. J. Muller
Cape Town	--- ---	Councillor P. D. Santilhano	--- C. G. Downie
Krugersdorp	--- ---	Councillor M. C. Dames	--- J. L. van der Walt
Port Elizabeth	--- ---	Councillor A. Markman	--- D. A. Bradley
Pretoria	--- ---	Councillor C. E. Acton	--- D. J. Hugo
Pietermaritzburg	--- ---	Councillor C. E. K. Young	--- C. R. Hallé
Salisbury	--- ---	Alderman A. Morton Jaffray	--- J. E. Mitchell
Springs	--- ---	Councillor L. P. Davies	--- J. C. Downie
			--- A. R. Sibson
			--- J. C. Fraser
<i>Councils/Rade : 1955-56 :</i>			<i>Engineers/Ingenieurs :</i>
Pretoria	--- ---	Councillor P. G. E. Blignaut	--- D. J. Hugo
Salisbury	--- ---	Alderman A. Morton Jaffray	--- J. E. Mitchell
Johannesburg	--- ---	Councillor D. J. Marais	--- R. W. Kane
Cape Town	--- ---	Councillor P. D. Santilhano	--- C. G. Downie
Pietermaritzburg	--- ---	Councillor C. E. K. Young	--- C. R. Hallé
Germiston	--- ---	Councillor H. Boneschans	--- C. Lombard
Krugersdorp	--- ---	Councillor P. J. Jonker	--- J. L. van der Walt
Springs	--- ---	Councillor L. P. Davies	--- J. C. Downey
Bloemfontein (Co-opted)	--- ---	Councillor F. J. C. Castelyn	--- G. J. Muller
			--- A. R. Sibson
<i>Councils/Rade : 1956-57 :</i>			<i>Engineers/Ingenieurs :</i>
Salisbury	--- ---	Alderman A. Morton Jaffray	--- J. E. Mitchell
Krugersdorp	--- ---	Councillor P. W. Marais	--- J. L. van der Walt
Johannesburg	--- ---	Councillor D. J. Marais	--- R. W. Kane
Cape Town	--- ---	Councillor P. D. Santilhano	--- C. G. Downie
Bulawayo	--- ---	Councillor S. H. Millar	--- A. R. Sibson
Germiston	--- ---	Councillor de Bruyn	--- C. Lombard
Durban	--- ---	Councillor J. McIntyre	--- R. M. O. Simpson
Springs	--- ---	Councillor L. P. Davies	--- J. C. Downey
Bloemfontein (Co-opted)	--- ---	Councillor F. J. C. Castelyn	--- G. J. Muller
			--- D. J. Hugo
<i>Councils/Rade : 1957-58 :</i>			<i>Engineers/Ingenieurs :</i>
Krugersdorp	--- ---	Councillor M. C. Dames	--- J. L. van der Walt
Cape Town	--- ---	Councillor W. J. Peters	--- C. G. Downie
Salisbury	--- ---	Alderman Morton Jaffray	--- J. E. Mitchell
Pretoria	--- ---	Councillor P. G. E. Blignaut	--- D. J. Hugo
Johannesburg	--- ---	Councillor D. J. Marais	--- R. W. Kane
Bulawayo	--- ---	Councillor S. H. Millar	--- A. R. Sibson
Durban	--- ---	Councillor J. McIntyre	--- R. M. O. Simpson
Springs	--- ---	Councillor L. P. Davies	--- J. C. Downey
Bloemfontein	--- ---	Councillor F. J. C. Castelyn	--- G. J. Muller
East London	--- ---	Councillor A. W. Louw	--- P. A. Giles