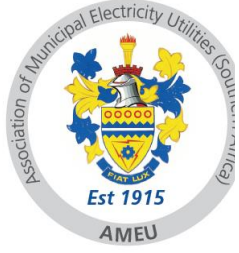


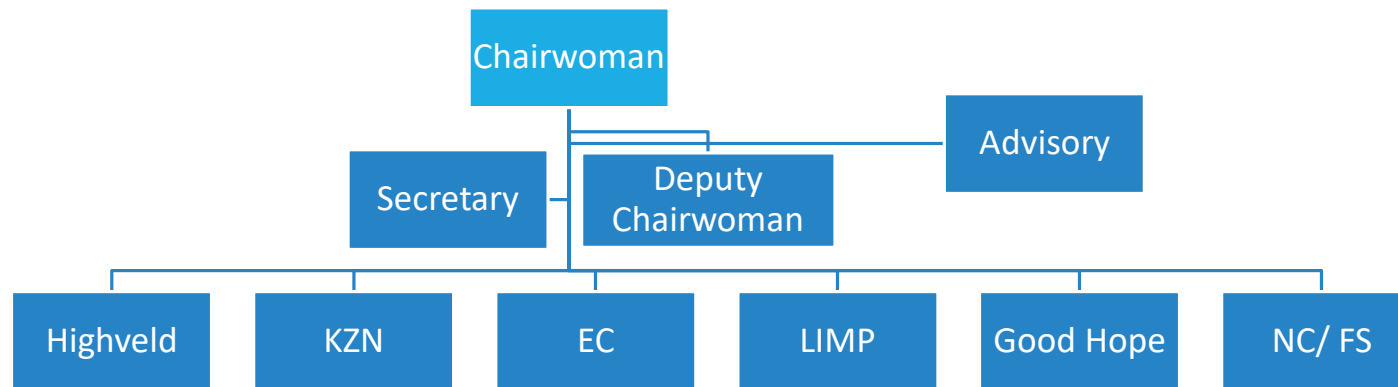


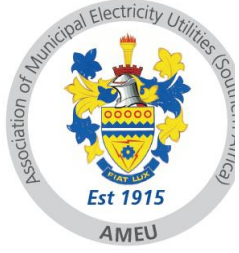
WiE – BRANCH PROGRESS FEEDBACK

20 FEB 2020



WiE Structure





WiE Highveld Branch Executive

Branch Chairperson
Granny Moreki
Emfuleni

Secretariat
Noshusha Della
Lesedi Municipality

Deputy Chairperson
Polelo Mphahlele
City of Tshwane





2020 Focus Area



Women in Electricity

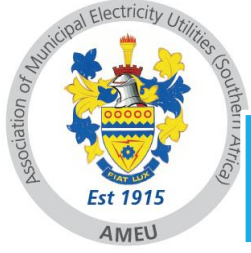


WiE Highveld Branch Launch

**READY TO
LAUNCH?**



- **Appointed Task Team**
- **Total number of ladies approximately 300 ladies**
- **Full day Programme**



Mentorship and Leadership Pillar



Mentorship & Leadership Development

- Develop successful mentors for WIE
- Increase the number of professionally registered women
- Technical development training

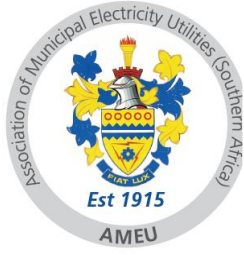
- Partnership with Vaal University of Technology on mentorship.
- 28 Feb – VUT Women in Engineering programme where WiE members will be speakers for the day



STEM TALKS “ BE CONFIDENT “



- Be Cofident initiative , the WiE members will be visiting high schools where there is an emphasise on taking STEM subjects at Grade 10
- This initiative is targeted at Grade 9 and 10 girl child
- March 2020 – Tembisa highschool



Mentorship and Leadership Pillar – TECHNICAL



Mentorship & Leadership Development

- Develop successful mentors for WIE
- Increase the number of professionally registered women
- Technical development training

- Introduction to Protection relays

Transformer Training
(Basic and Advanced)

- Cable Testing
- Cable Fault location



WiE Training Matrix

Position	Electric Motors and Transformers	SSEG Training for Municipalities	PV Procurement Training for Municipalities	Anaerobic Digestion of Municipal Waste Water	Cable Jointing	Cable Fault Location	Fibre jointing training	Substation Protection	Management Labor Relations	10 pillar programme	Smart Meters
Supervisor Handyman/ Team Leader											
Electrician											
Senior Ops Officer											
Technican											
Senior Technician											
Engineering Technician/ Electronic Technician											
Technical Assistant											
Customer Advisor											
Senior Engineer											
Chief Engineer											
Management											

NEXT WiE Activities for the next 2 months

FEBRUARY			DoE Metro Forum		WIE Good Hope Branch	WIE Good Hope Branch	
	17	18	19	20	21 DoE NEAC (To be approved) WIE Highveld Branch	22	23
	24	25	26 Executive Council *	27 Sub Committees *	28 WIE Limpopo Branch WIE Meetings Sub Committees *	1 WIE Limpopo Branch	2
	3	4	5 WIE National Committee Meeting	6	7 Effecting Change 1st WIE Session WIE KZN Branch	8 WIE KZN Branch	9
	10	11	12 WIE Namibia Branch	13 WIE Namibia Branch	14 WIE Namibia Branch	15 WIE Namibia Branch	16
MARCH 2019	17	18	19	20	21	22	23
	24	25	26	27	28	29	30
	31	1	2 Affiliate Steering	3	4 WIE Mpumalanga Branch	5	6 Effecting Change 2nd WIE Session
	7	8	9 Affiliate Main	10	11 WIE Central Branch	12	13
APRIL 2019	14	15	16	17	18	19	20
	21	22	23	24	25	26	27
	28	29	30	1	2	3	4

2019



Women in Electricity

KZN WiE Launch May 2019



Women in Electricity

General



AMEU Technical Slot for WiE – Members are encouraged to present papers at the convention



**SAIEE mentorship, this will be done in groups
ECSA workshop of ECSA professional registration**



**Eastern Cape launched WiE program on 31 Jan 2019
KZN launched WiE program May 2019**



Workshops and Trainings will be shared with all members



Any female attending AMEU and not part of WiE is encouraged to register as a WiE members on the website

Thank You



Women in Electricity