

ACTOM

A white line graphic on a blue background. It starts as a horizontal line on the left, then splits into two diagonal lines that point upwards towards the 'C' and 'O' of the word 'ACTOM'.

NAMIBIA AEDU Walvis Bay 16 March 2023 SAFETY DISCUSSION

STRUAN STEELE

24 March 2023

NAMIBIA LAND OF THE BRAVE

- Challenging Country to operate in.
- Many small cash strapped municipalities
- Environmental Challenges
- Operational challenges
- We are brave men and women
- We switch confidently on poorly maintained oil insulated switchgear
- We don't need suits



SAFETY DISCUSSION

- Slides from around Namibia to awaken awareness
- Panel discussion from the regions
- Questions and Answers



MAINTENANCE



OLD EQUIPMENT



BAD SUBSTATIONS



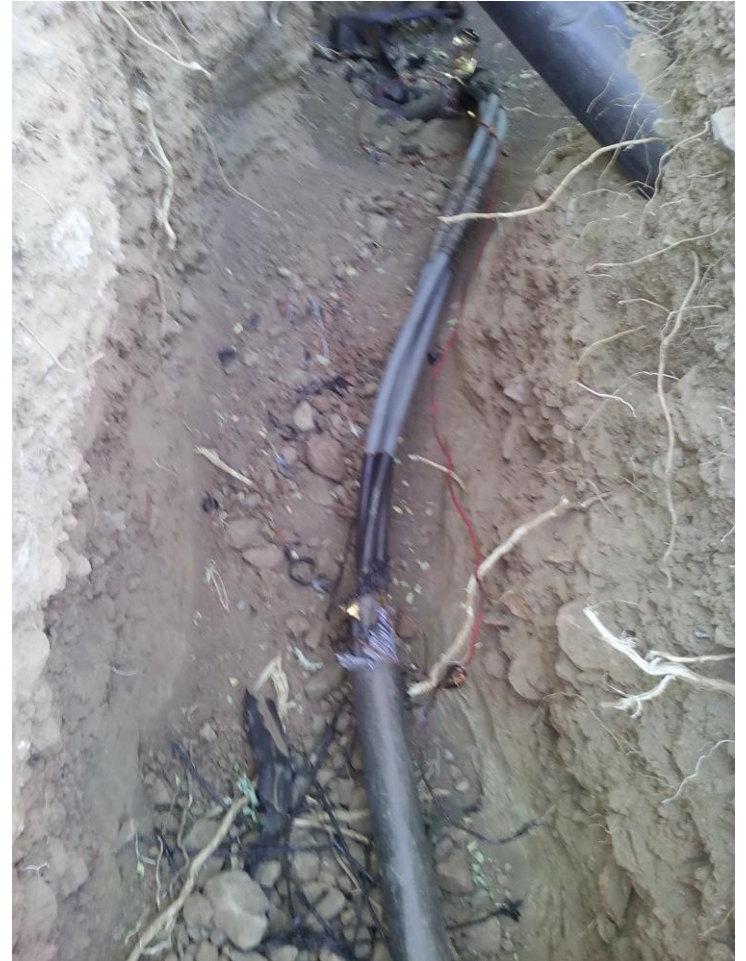
BAD SUBSTATIONS



BAD SUBSTATIONS



BAD SUBSTATIONS



BAD SUBSTATIONS



THEFT



THEFT



BOER MAAK N PLAN



BOER MAAK N PLAN



BOER MAAK N PLAN



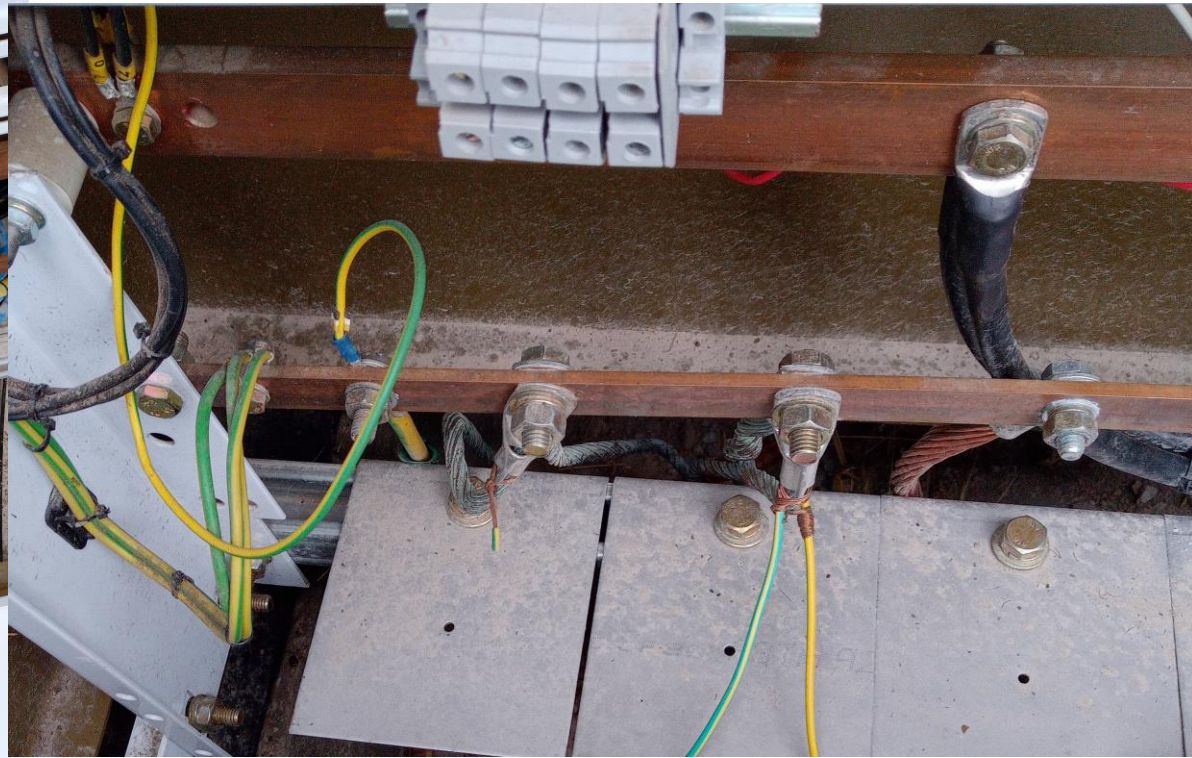
BAD INSTALLATIONS



BAD INSTALLATIONS



BAD INSTALLATIONS



POOR TERMINATIONS



POOR TERMINATIONS



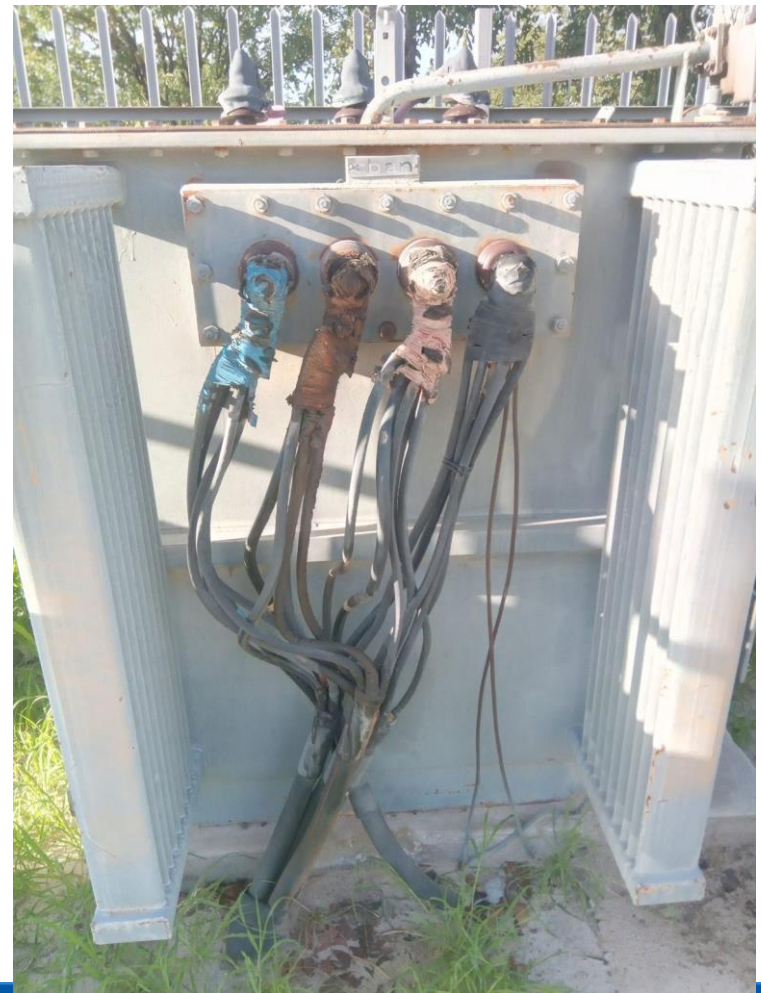
POOR TERMINATIONS



POOR INSTALLATIONS



BAD INSTALLATIONS



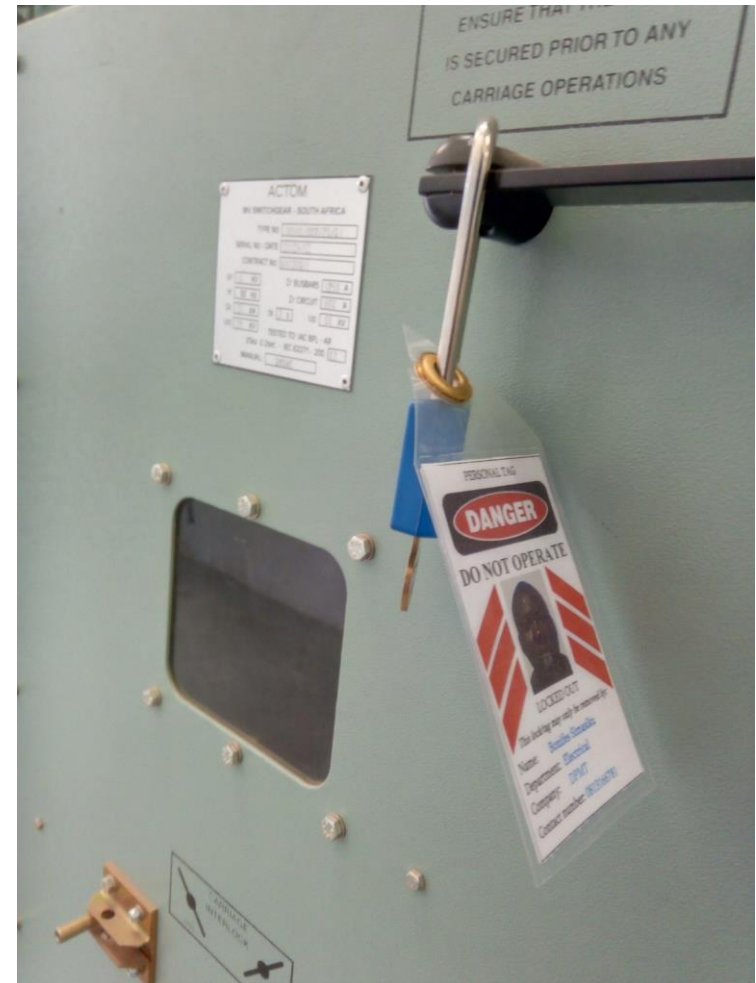
DANGEROUS MANUFACTURING



UNSAFE ACTS



A photograph of a door handle with a red American Lock padlock and a yellow key hanging from it. Above the handle is a warning sign that reads: WARNING ENSURE THAT THE DOOR IS SECURED PRIOR TO ANY CARRIAGE OPERATIONS.



POOR WORKMANSHIP



ENVIRONMENTAL



VERMIN



ACTOM

POLE MOUNTED TRANSFORMER FAILURE



CABLE FAULT



MINISUB FAILURE



DISTRACTIONS



how my wife expects
me to answer my phone
when she calls

www.actom.co.za